

We've enhanced the security on our web forms and e-gov pages.

For your protection, you will need to enable SSL and TLS protocols on your web browsers.

Please make sure to have these settings active before you call in any issue pertaining our website.

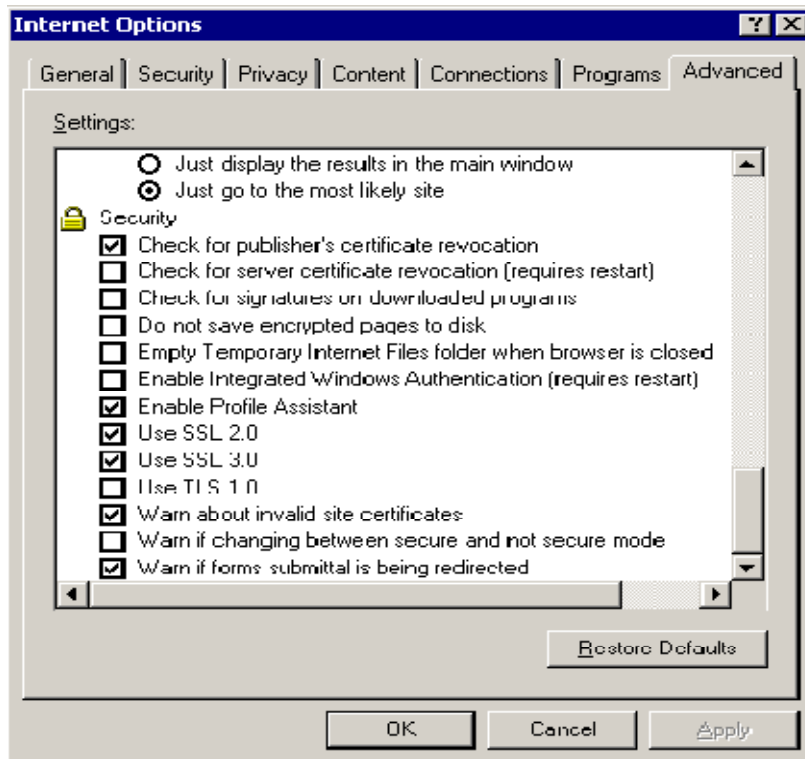
Procedures for setting up your browser to use our new secure services are shown below.

Google Chrome: In order to enable TLS 1.0 in Chrome do the following:

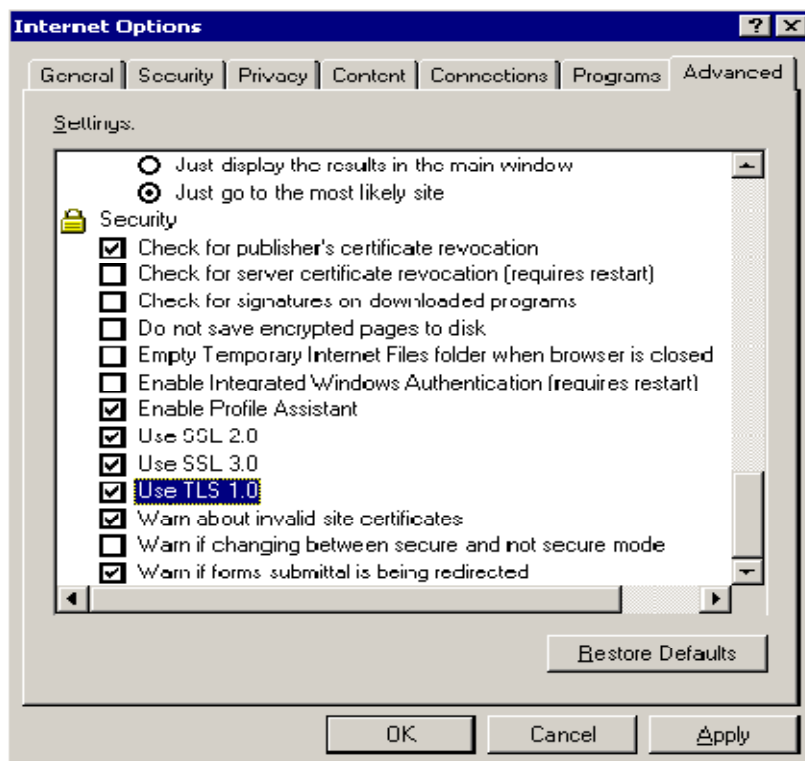
1. Click the wrench icon:
2. Choose Options
3. Select "Under the Hood" Tab
4. Click Change proxy settings
5. Select "Advanced" Tab
6. Scoll down and check TLS 1.0
7. Close and restart all open browsers.

How to Enable TLS 1.0 in Internet Explorer, FIREFOX & SAFARI

- In Internet Explorer, go to **Tools -> Internet Options -> Advanced** tab.
- Scroll down to the **Security** section (at the bottom).



- Check **Use TLS 1.0**

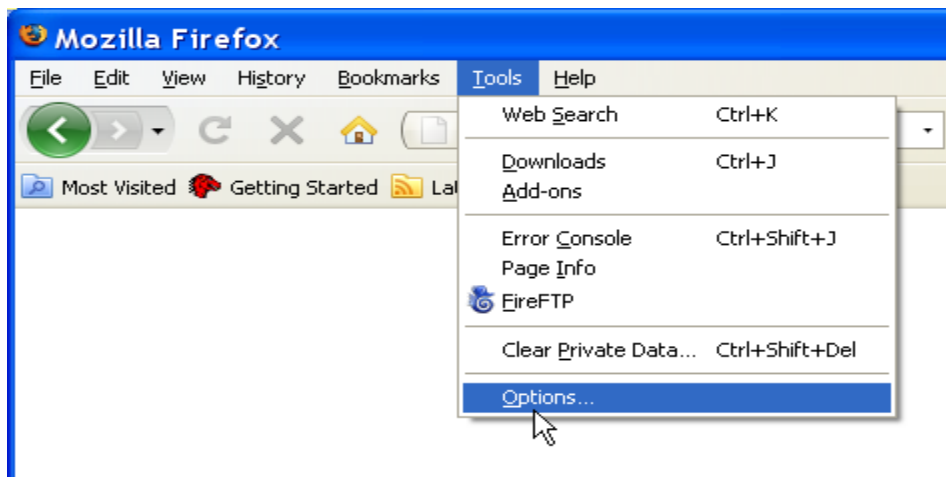


- Click **OK**

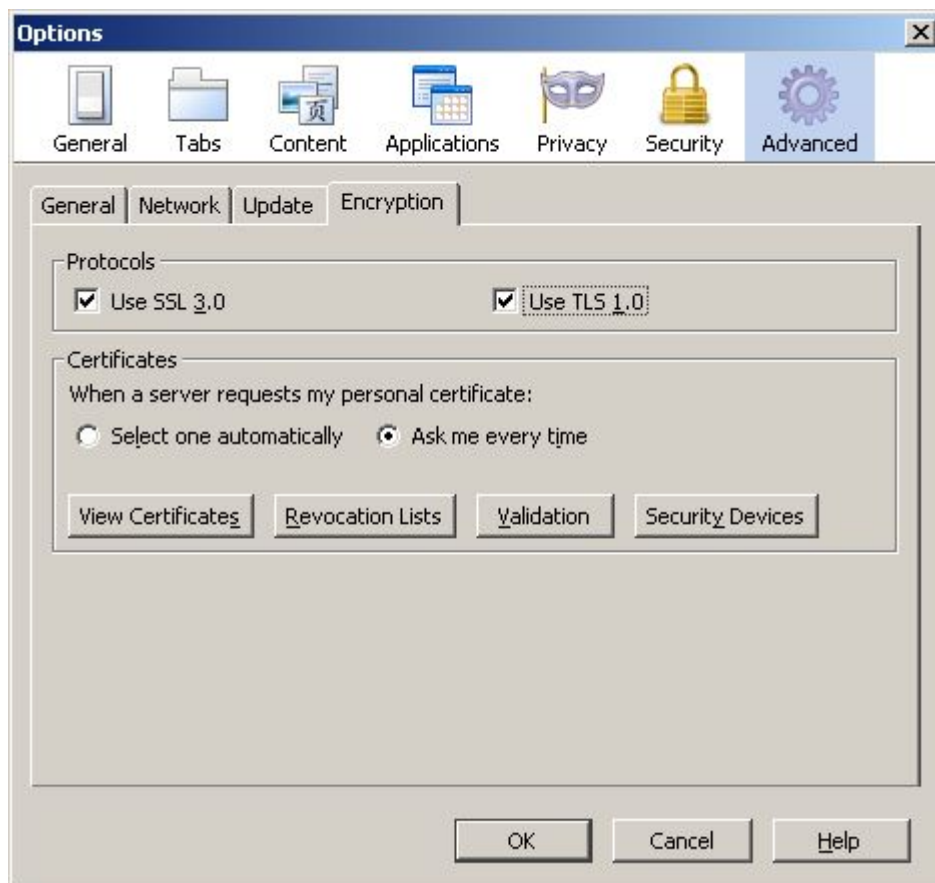
Try to access a secure site again.

FIREFOX

1. At the top of the Firefox window, click on the **Tools** menu, and select **Options...**



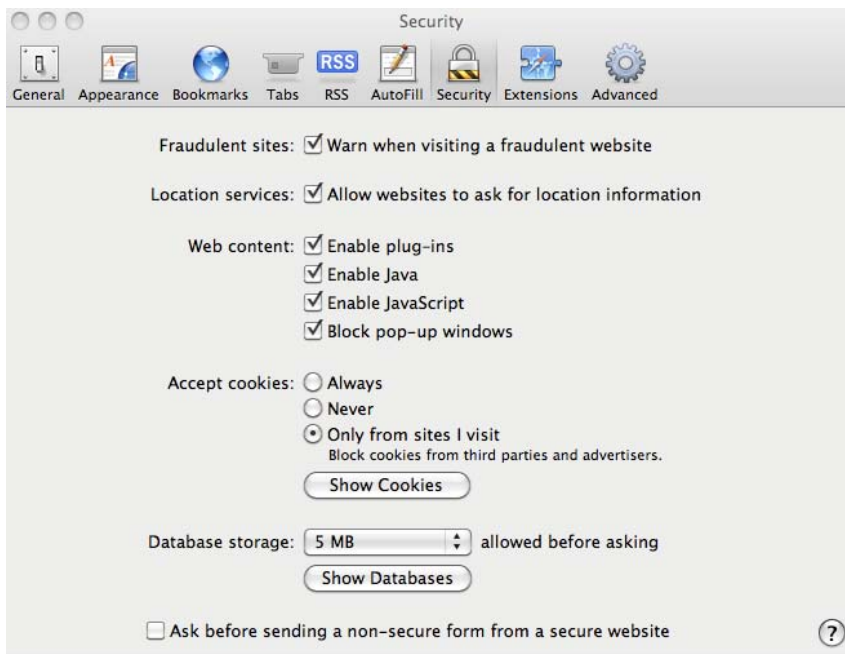
2. In the options window, select the **Advanced** panel, then select the **Encryption** tab.
3. Ensure that the **Use TLS 1.0** box is checked.



Try to access a secure site again.

SAFARI

- Click Safari in the upper left corner of your display.
- Click Preferences.
- Select the Security icon and ensure that Enable plug-ins, Enable Java, and Enable JavaScript are checked.
- Close the window.



Try to access a secure site again.